

**NUMBER: 390120003.01****MODEL: Karma****DATE: January 20, 2012****MODEL YEAR: 2012****TITLE: Baseline 613 Release Overview****PRIORITY:**

Vehicle in Shop

MARKET REGION:

U.S., Canada, Europe

PURPOSE:

Flash reprogramming allows the ECU software to be updated without replacing the ECU. Flash calibration updates for specific vehicle models/ECUs are released as field-fix procedures described in individual service bulletins.

This Campaign will be used as a reference guide for technicians to update a vehicle to Baseline 613 by listing software ID numbers as well as the required flash files necessary to update an ECU. A baseline update may only require that certain ECUs to be updated. Using this guide, the technician can determine what ECUs have updates and those that do not require it.

CHANGES:

Driver Information System (DIS) – Improved software robustness. BL613 will prevent the speedometer from shutting down if there is still a speed signal on the CAN bus. Additionally, the new software will eliminate random shutdowns of the display and also increases the low fuel threshold from 3/10% to 10/20%.

Battery Energy Control Module (BECM) – Prevents P262B, U019B, P0D22, and P0C43 DTCs from setting invalid fault codes. With the new software, the HV battery's internal clock will sync itself with the GPS clock every 5 minutes to ensure its accuracy, resolving P262B DTC. BL613 also resolves software issues that can potentially cause intermittent battery charging problems.

Vehicle Control Module (VCM) – Baseline 613 includes the ability to allow the VCM settings to be configured to North American or European specifications using the Fisker Workshop Tester. Any vehicle in which the VCM was updated to Baseline 612 will need to perform this additional step.

OVERVIEW:

Touch Panel Interface Flash Reprogramming

1. Baseline 613 ECU Software Identification Number
2. Baseline 613 ECU Flash Application Quick Reference Sheet
3. Driver Information System Flash Reprogramming
4. Battery Energy Control Module Flash Reprogramming
5. Vehicle Control Module Configuration
6. Post ECU Flash Reprogramming Procedure

Fisker Bulletins are intended for use by experienced and trained Technicians. If you lack the skills, tools, equipment and a suitable workshop for any procedure described in this document, we suggest you leave such repairs to an Authorized Fisker Retailer or other qualified shop. See your Fisker Retailer for advice on whether your vehicle may benefit from the information contained within this document. The information contained in the Fisker Bulletin is accurate at the date of publication. However, Fisker Automotive regularly updates technical information. Please check with your Fisker Retailer that the bulletin you intend to use contains the latest available information.



NUMBER: 390120003.01

MODEL: Karma

DATE: January 20, 2012

MODEL YEAR: 2012

TITLE: Baseline 613 Release Overview

Baseline 613 ECU Software Identification Number

ECU	Software Version (BL613)
VGM	0350-04-00
VCM (Config. Only)	0002-05-02
CIU	05.02.07.00 (Check TPI Screen)
TPI	0031-01-11
DIS (Updated)	0041-01-33
EPB	0061-00-02
EBCM T1	0070-03-04
EBCM T3	0071-03-08
HCU	0111-04-0A
HCU – EV	0116-00-01
ECM	0121-05-00
BECM (Updated)	0156-00-15
HVAC	0162-00-08
PIM_TM1 Aux	0282-01-02
PIM_TM1 Master	0281-06-06
PIM_TM2 Aux	0292-01-02
PIM_TM2 Master	0291-06-06
PIM_GEN Aux	0302-01-02
PIM_GEN Master	0301-06-06
APM	0311-01-00

NOTE: The DIS, BECM and VCM (configuration files only) are the only ECUs that have updates in Baseline 613. If the Software Versions on the vehicle match the table above; it is not necessary to flash the other ECUs again.

Fisker Bulletins are intended for use by experienced and trained Technicians. If you lack the skills, tools, equipment and a suitable workshop for any procedure described in this document, we suggest you leave such repairs to an Authorized Fisker Retailer or other qualified shop. See your Fisker Retailer for advice on whether your vehicle may benefit from the information contained within this document. The information contained in the Fisker Bulletin is accurate at the date of publication. However, Fisker Automotive regularly updates technical information. Please check with your Fisker Retailer that the bulletin you intend to use contains the latest available information.



NUMBER: 390120003.01

MODEL: Karma

DATE: January 20, 2012

MODEL YEAR: 2012

TITLE: Baseline 613 Release Overview

Baseline 613 ECU Flash Application Quick Reference Sheet

The following quick reference guide should be used for vehicles that are being updated to Baseline 613. This quick reference sheet will be used for two purposes:

- 1a. Updating a 2012 Fisker Karma (software level BL612) to BL613 software level (latest available).
- 1b. In the event an ECU requires replacement/reflashing this guide provides the latest available software (613).

How to Use the Quick Reference Sheet:

IMPORTANT! READ BEFORE FLASHING!

The ECU tables that are in **BOLD** font indicate an ECU that has been updated in this release. To successfully update a vehicle's software level to 613, flash the updated ECUs (**DIS, BECM, VCM Configuration Settings**) using the files listed in this guide. Unless otherwise instructed, all ECUs should be flashed while the vehicle is in ACC mode.

All other ECUs should not be flashed unless the Software Version IDs do not match the chart on Page 3 of this service bulletin. These ECUs will be listed in a GREY font.

***NOTE:** Regarding the tables on the following pages, pay attention to any text in **RED** font. These are important notes that will aid in successfully flashing the ECU.*

Fisker Bulletins are intended for use by experienced and trained Technicians. If you lack the skills, tools, equipment and a suitable workshop for any procedure described in this document, we suggest you leave such repairs to an Authorized Fisker Retailer or other qualified shop. See your Fisker Retailer for advice on whether your vehicle may benefit from the information contained within this document. The information contained in the Fisker Bulletin is accurate at the date of publication. However, Fisker Automotive regularly updates technical information. Please check with your Fisker Retailer that the bulletin you intend to use contains the latest available information.



NUMBER: 390120003.01

MODEL: Karma

DATE: January 20, 2012

MODEL YEAR: 2012

TITLE: Baseline 613 Release Overview

ECU	EBCM: T1 Flash in System Ready
SBL	EBCM_SBL_0072_00_00.zip
APP	EBCM_APP_0070_03_04.zip
CAL	EBCM_CAL_0076_03_04.zip

ECU	EBCM: T3 Flash in System Ready
SBL	EBCM_SBL_0074_00_00.zip
APP	EBCM_APP_0071_03_08.zip
CAL	EBCM_CAL_0077_03_08.zip

ECU	Engine Control Module
SBL	<choose file>
APP	ECM_APPCAL_0121_05_00+0127_05_00.zip
CAL	<choose file>

ECU	Driver Information System
SBL	DIS_SBL_0044_00_00.zip
APP	DIS_APP_0041_01_33.zip
CAL	<choose file>

ECU	BECM
SBL	BECM_SBL_0154_00_03.zip
APP	BECM_APP_0156_00_15.zip
CAL	BECM_CAL_014F_00_00.dsc.hex

ECU	Hybrid Control Unit
SBL	HCU_SBL_0114_00_0A.zip
APP	HCU_APP_0111_04_0A.zip
CAL	<choose file>

ECU	HCU – EV (Denmark & Norway ONLY)
SBL	HCU_SBL_0114_00_0A.zip
APP	HCU_APP_0116_00_01.zip
CAL	<choose file>

ECU	VGM – IMPORTANT! Flash BEFORE VCM
SBL	VGM_SBL_0352_00_00.zip
APP	VGM_APP_0350_04_00.zip
CAL	<choose file>

VCM – IMPORTANT! Flash AFTER VGM	
SBL	ECU_SBL_0003_00_00.zip
APP	ECU_APP_0002_05_02.zip
CAL	<choose file>

THEN FLASH

ECU	Vehicle Control Module
SBL	<choose file>
APP	<choose file>
CAL	VCM_DSC_ECU_RESET_TO_NEW.dsc.hex

VCM Configuration Files (Flash After VCM ECU Reset)

ECU	Vehicle Control Module
North America With Backup Camera	
SBL	<choose file>
APP	<choose file>
CAL	VCM_DSC_C012_NA_CONFIG_W_CAMERA.dsc.hex

North America Without Backup Camera	
SBL	<choose file>
APP	<choose file>
CAL	VCM_DSC_C012_NA_CONFIG_WO_CAMERA.dsc.hex

Europe With Backup Camera	
SBL	<choose file>
APP	<choose file>
CAL	VCM_DSC_C012_EU_CONFIG_W_CAMERA.dsc.hex

Europe Without Backup Camera	
SBL	<choose file>
APP	<choose file>
CAL	VCM_DSC_C012_NA_CONFIG_WO_CAMERA.dsc.hex

Fisker Bulletins are intended for use by experienced and trained Technicians. If you lack the skills, tools, equipment and a suitable workshop for any procedure described in this document, we suggest you leave such repairs to an Authorized Fisker Retailer or other qualified shop. See your Fisker Retailer for advice on whether your vehicle may benefit from the information contained within this document. The information contained in the Fisker Bulletin is accurate at the date of publication. However, Fisker Automotive regularly updates technical information. Please check with your Fisker Retailer that the bulletin you intend to use contains the latest available information.



NUMBER: 390120003.01

MODEL: Karma

DATE: January 20, 2012

MODEL YEAR: 2012

TITLE: Baseline 613 Release Overview

CIU – Navigation Patch	
Insert Step 1 Flash drive into center console USB port	
SBL	CIU_SBL_002A_00_00.zip
APP	CIU_APP_0021_05_08.zip
CAL	CIU_DSC_Navigation_11_12_05.dsc.hex
CIU - Software Update	
Insert Step 2 Flash drive into center console USB port	
SBL	CIU_SBL_002A_00_00.zip
APP	CIU_APP_0021_05_08.zip
CAL	CIU_CAL_002B_00_00.dsc.hex

ECU	PIM GEN – Aux
SBL	GEN_SBL_0304_01_00.zip
APP	GEN_AUX_0302_01_02.zip
CAL	<choose file>

ECU	PIM GEN – Master
SBL	GEN_SBL_0304_01_00.zip
APP	GEN_APP_0301_06_06.zip
CAL	<choose file>

NOTE: When flashing PIM TM1, PIM TM2, and PIM GEN; the Aux files must be flashed before the Master files are flashed.

ECU	Touch Panel Interface
SBL	TPI_SBL_0032_00_00.zip
APP	TPI_APP_0031_01_11.zip
CAL	<choose file>

ECU	PIM TIM1 – Aux
SBL	TM1_SBL_0284_01_00.zip
APP	TM1_AUX_0282_01_02.zip
CAL	<choose file>

ECU	PIM TIM1 – Master
SBL	TM2_SBL_0284_01_00.zip
APP	TM2_APP_0281_06_06.zip
CAL	<choose file>

ECU	PIM TIM2 – Aux
SBL	TM2_SBL_0294_01_00.zip
APP	TM2_AUX_0292_01_02.zip
CAL	<choose file>

ECU	PIM TIM2 – Master
SBL	TM2_SBL_0294_01_00.zip
APP	TM2_APP_0291_06_06.zip
CAL	<choose file>

Fisker Bulletins are intended for use by experienced and trained Technicians. If you lack the skills, tools, equipment and a suitable workshop for any procedure described in this document, we suggest you leave such repairs to an Authorized Fisker Retailer or other qualified shop. See your Fisker Retailer for advice on whether your vehicle may benefit from the information contained within this document. The information contained in the Fisker Bulletin is accurate at the date of publication. However, Fisker Automotive regularly updates technical information. Please check with your Fisker Retailer that the bulletin you intend to use contains the latest available information.



NUMBER: 390120003.01

MODEL: Karma

DATE: January 20, 2012

MODEL YEAR: 2012

TITLE: Baseline 613 Release Overview

Preparing the Vehicle for ECU Flash Reprogramming

NOTE: Battery voltage must be maintained between 12.2 and 16 volts while flashing an ECU.

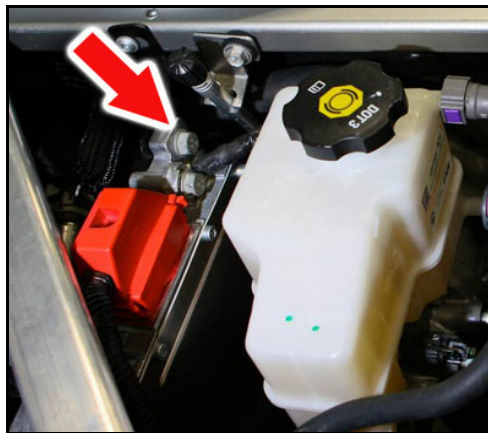
2a. Disconnect the vehicle from the High Voltage wall charger

2b. Verify the vehicle's 12 volt battery is at or above 12.2 volts before proceeding.

– If the low-voltage Battery is not at least 12.2 volts, you must charge battery. Connect the positive lead of the Midtronics MDX series tester (or equivalent) to the B+ positive post at the Power Distribution Center (PDC) with Fisker Special Tool **FST9001 – Battery Charging Terminal Adaptor** (to be used for all electrical system testing and charging). Connect the – Negative lead to the Accessory Power Module (APM) ground terminal.



FST9001 - Battery Charging Terminal Adaptor (red arrow) installed on the B+ post in the PDC.



Negative chassis ground (red arrow) location on Accessory Power Module (APM).

Fisker Bulletins are intended for use by experienced and trained Technicians. If you lack the skills, tools, equipment and a suitable workshop for any procedure described in this document, we suggest you leave such repairs to an Authorized Fisker Retailer or other qualified shop. See your Fisker Retailer for advice on whether your vehicle may benefit from the information contained within this document. The information contained in the Fisker Bulletin is accurate at the date of publication. However, Fisker Automotive regularly updates technical information. Please check with your Fisker Retailer that the bulletin you intend to use contains the latest available information.



NUMBER: 390120003.01

MODEL: Karma

DATE: January 20, 2012

MODEL YEAR: 2012

TITLE: Baseline 613 Release Overview

NOTE: *Battery voltage must be maintained between 12.2 and 16 volts while flashing.*

2c. Before ECU flash reprogramming can be started; the vehicle must be in the ACC – Accessory mode.

– With the vehicle completely off, press the SSB – Start/Stop Button once. The SSB backlighting will turn amber and the DIS will display “ACC.”

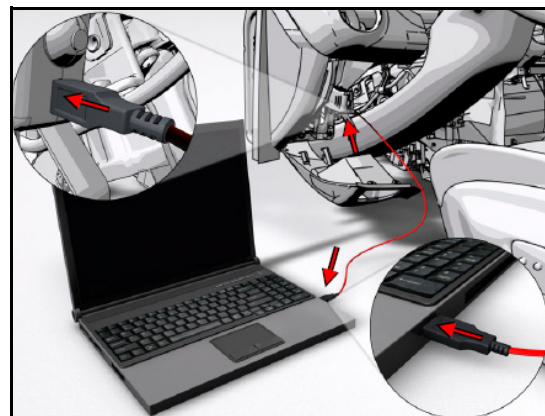
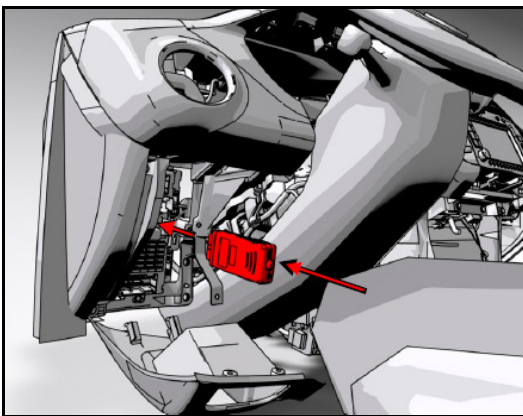
2d. When the ECU is being reprogrammed; the vehicle must be prevented from going into Sleep mode. This can be accomplished simply by turning on the Hazard Warning Lights.

NOTE: *If the vehicle goes into sleep mode while the ECU is being reprogrammed; the reprogramming may be unsuccessful and can potentially damage the ECU.*

Connecting the Fisker Scan Tool and Download BL613_2 Diagnostic Package

3a. Connect the WDI to the Data Link Connector (DLC) located underneath the Driver’s side dash. Then connect the WDI to the Fisker laptop with the provided USB cable.

NOTE: *The laptop will automatically install the drivers needed. Please wait for this to finish before continuing.*



NOTE: *It is highly recommended to use the USB when flash reprogramming the ECU. It is faster and more reliable than using the Bluetooth connection.*

Fisker Bulletins are intended for use by experienced and trained Technicians. If you lack the skills, tools, equipment and a suitable workshop for any procedure described in this document, we suggest you leave such repairs to an Authorized Fisker Retailer or other qualified shop. See your Fisker Retailer for advice on whether your vehicle may benefit from the information contained within this document. The information contained in the Fisker Bulletin is accurate at the date of publication. However, Fisker Automotive regularly updates technical information. Please check with your Fisker Retailer that the bulletin you intend to use contains the latest available information.



NUMBER: 390120003.01

MODEL: Karma

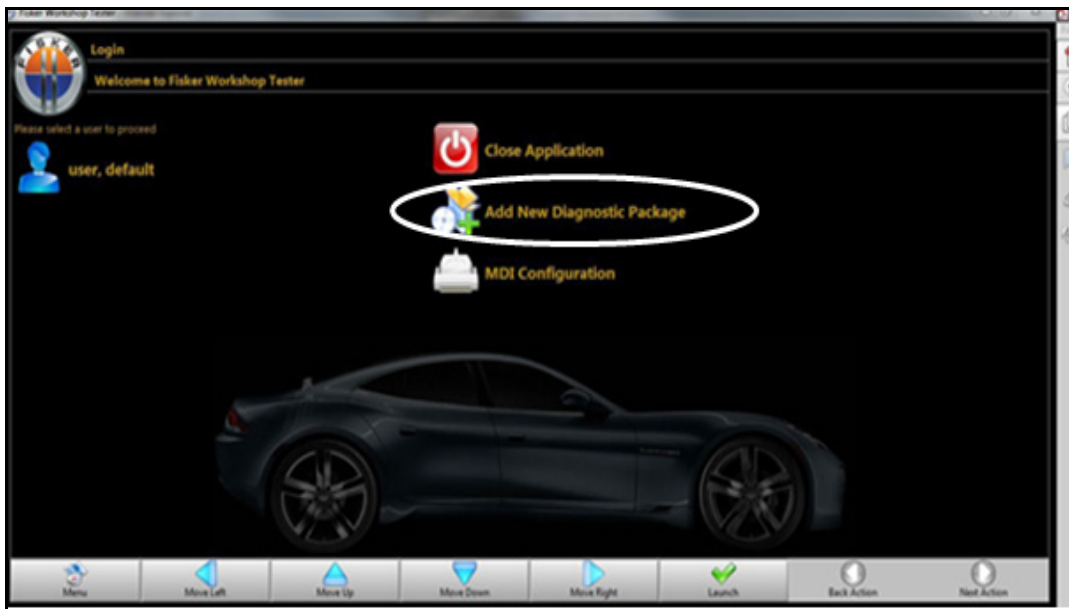
DATE: January 20, 2012

MODEL YEAR: 2012

TITLE: Baseline 613 Release Overview

3b. Before ECU flash reprogramming, ensure your laptop is updated with the latest diagnostic data package/ECU software.

3c. Open the FiskerWT software. Update by clicking the “*Add New Diagnostic Package*” Icon from the main screen.



3d. Press the “*Download ODX*” Button to download Version 613_2. This will open a window showing the download progress. Please wait until the download is complete before continuing.

3e. Next press the “*Download Descriptors*” button. After the dialog box dismisses, a number of deliverables should be shown on the left side.

3f. Select the descriptor that you want to install and select the “*Download*” button. This will open a window showing the download progress. Please wait until the download is complete before continuing.

Fisker Bulletins are intended for use by experienced and trained Technicians. If you lack the skills, tools, equipment and a suitable workshop for any procedure described in this document, we suggest you leave such repairs to an Authorized Fisker Retailer or other qualified shop. See your Fisker Retailer for advice on whether your vehicle may benefit from the information contained within this document. The information contained in the Fisker Bulletin is accurate at the date of publication. However, Fisker Automotive regularly updates technical information. Please check with your Fisker Retailer that the bulletin you intend to use contains the latest available information.



NUMBER: 390120003.01

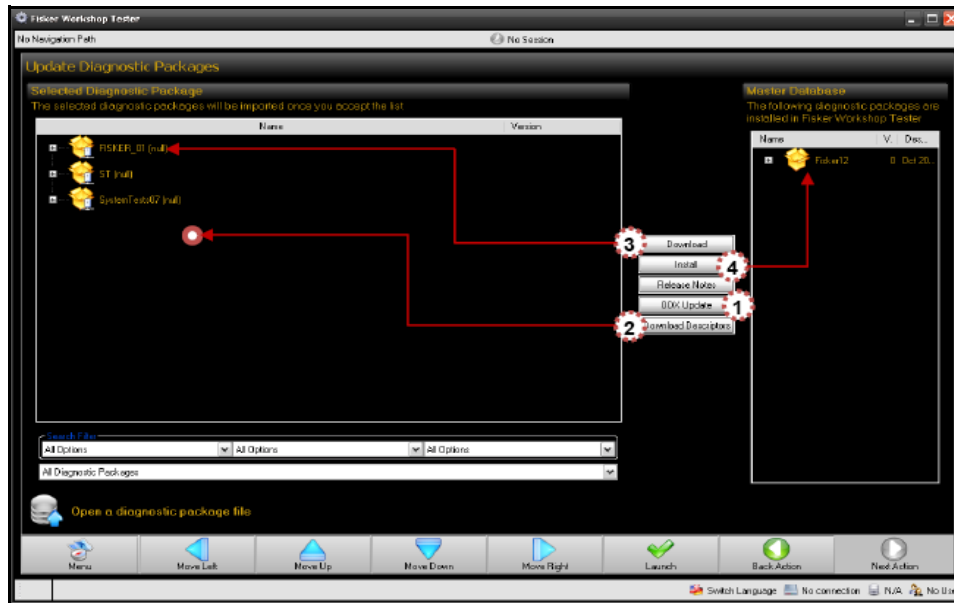
MODEL: Karma

DATE: January 20, 2012

MODEL YEAR: 2012

TITLE: Baseline 613 Release Overview

3g. After the download of the descriptor is complete, select the “Install” button or double click on the deliverable. As a result, the deliverable will be shown on the right hand side, indicating it is installed to the laptop.



NOTE: It is recommended to perform this update procedure constantly as new diagnostic packages will be released frequently. Completing this procedure before using the Fisker scan tool ensures that you have the latest data available.

3h. Select Back Action to return to the main menu once the update is complete.

3i. Select “user, default” to move on to the MDI Configuration screen.

Fisker Bulletins are intended for use by experienced and trained Technicians. If you lack the skills, tools, equipment and a suitable workshop for any procedure described in this document, we suggest you leave such repairs to an Authorized Fisker Retailer or other qualified shop. See your Fisker Retailer for advice on whether your vehicle may benefit from the information contained within this document. The information contained in the Fisker Bulletin is accurate at the date of publication. However, Fisker Automotive regularly updates technical information. Please check with your Fisker Retailer that the bulletin you intend to use contains the latest available information.



NUMBER: 390120003.01

MODEL: Karma

DATE: January 20, 2012

MODEL YEAR: 2012

TITLE: Baseline 613 Release Overview

3j. Select WDI (Connection Type - USB) by clicking on it once. When the gray box turns green, the WDI is ready to use.



NOTE: There may be new firmware to install depending on when you have last connected. By selecting the WDI connected via the USB cable, any new firmware will install automatically. When the installation is complete, the MDI selection menu will refresh automatically.



Fisker Bulletins are intended for use by experienced and trained Technicians. If you lack the skills, tools, equipment and a suitable workshop for any procedure described in this document, we suggest you leave such repairs to an Authorized Fisker Retailer or other qualified shop. See your Fisker Retailer for advice on whether your vehicle may benefit from the information contained within this document. The information contained in the Fisker Bulletin is accurate at the date of publication. However, Fisker Automotive regularly updates technical information. Please check with your Fisker Retailer that the bulletin you intend to use contains the latest available information.



NUMBER: 390120003.01

MODEL: Karma

DATE: January 20, 2012

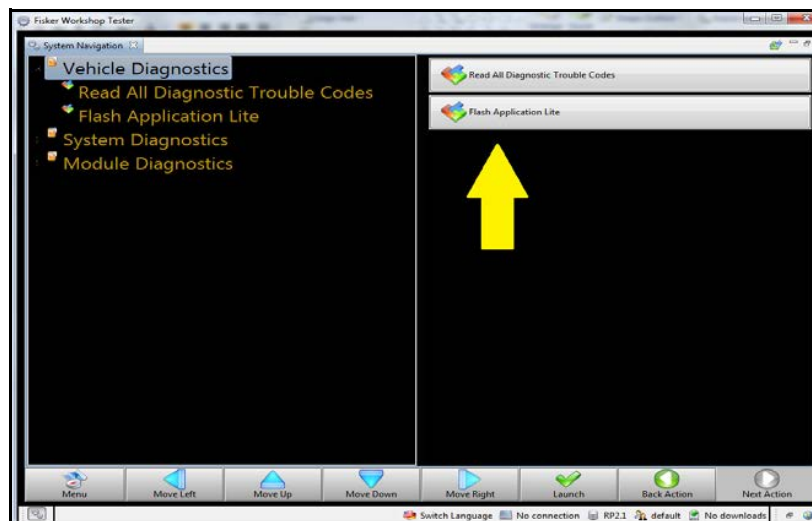
MODEL YEAR: 2012

TITLE: Baseline 613 Release Overview

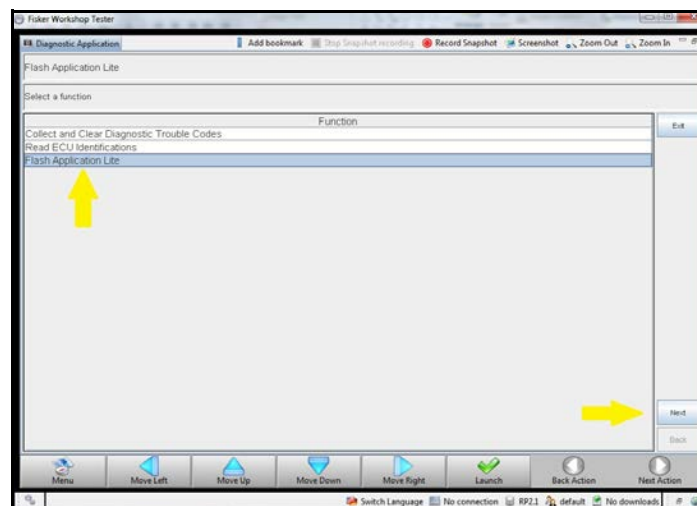
3k. With a WDI selected, click on “Next Action” to move to the VIN Entry Screen. Enter the vehicle information to continue.

Touch Panel Interface Flash Reprogramming (Baseline 613 2)

4a. After opening FiskerWT and entering the vehicle information; select Flash Application Lite in the System Navigation menu.



4b. Click once to highlight “Flash Application Lite” and then click on “Next” in the bottom right hand corner to continue.



Fisker Bulletins are intended for use by experienced and trained Technicians. If you lack the skills, tools, equipment and a suitable workshop for any procedure described in this document, we suggest you leave such repairs to an Authorized Fisker Retailer or other qualified shop. See your Fisker Retailer for advice on whether your vehicle may benefit from the information contained within this document. The information contained in the Fisker Bulletin is accurate at the date of publication. However, Fisker Automotive regularly updates technical information. Please check with your Fisker Retailer that the bulletin you intend to use contains the latest available information.



NUMBER: 390120003.01

MODEL: Karma

DATE: January 20, 2012

MODEL YEAR: 2012

TITLE: Baseline 613 Release Overview

NOTE: Not all ECUs will have updates in a baseline release. Consult the latest Baseline Release Guide to find the latest software available for an ECU.

4c. In the next screen, select the following from the drop down menus:

ECU	Driver Information System
SBL	DIS_SBL_0044_00_00.zip
APP	DIS_APP_0041_01_33.zip
CAL	<choose file>

Flash Application Lite

Please select the ECU and flash files

ECU: Driver Information System [Exit]

SBL: DIS_SBL_0044_00_00.zip

APP: DIS_APP_0041_01_33.zip

CAL: <choose file>

[Flash]

Fisker Bulletins are intended for use by experienced and trained Technicians. If you lack the skills, tools, equipment and a suitable workshop for any procedure described in this document, we suggest you leave such repairs to an Authorized Fisker Retailer or other qualified shop. See your Fisker Retailer for advice on whether your vehicle may benefit from the information contained within this document. The information contained in the Fisker Bulletin is accurate at the date of publication. However, Fisker Automotive regularly updates technical information. Please check with your Fisker Retailer that the bulletin you intend to use contains the latest available information.



NUMBER: 390120003.01

MODEL: Karma

DATE: January 20, 2012

MODEL YEAR: 2012

TITLE: Baseline 613 Release Overview



WARNING!

DO NOT ALLOW LAPTOP TO GO INTO SLEEP OR SCREENSAVER MODE DURING THIS PROCESS.

TURN OFF SCREEN SAVER IF NECESSARY AND ENSURE PC STAYS AWAKE. LAPTOP MUST BE PLUGGED INTO AC SOURCE DURING THIS PROCESS.

4d. Once the correct files to flash the TPI to Baseline 613_2 have been selected; Press the "Start Flash" button to begin.

– The scan tool will now begin to flash the DIS. In the message box, you will be alerted to the status of the flash.

Example: "Prepare vehicle for flash..." and "Starting flash..."

NOTE: *The Touch Panel Interface screen will go blank while it is being flashed. Once the flash has been completed successfully, the screen will return.*



WARNING!

DO NOT DISTURB THE VEHICLE OR INTERRUPT THE CONNECTION BETWEEN THE SCAN TOOL AND THE VEHICLE ONCE FLASHING HAS STARTED.

THE PROGRESS BAR MAY LOOK FROZEN – THIS IS NORMAL. IF THERE IS A PROBLEM YOU WILL BE ALERTED THAT THE FLASH HAS BEEN UNSUCCESSFUL.

Fisker Bulletins are intended for use by experienced and trained Technicians. If you lack the skills, tools, equipment and a suitable workshop for any procedure described in this document, we suggest you leave such repairs to an Authorized Fisker Retailer or other qualified shop. See your Fisker Retailer for advice on whether your vehicle may benefit from the information contained within this document. The information contained in the Fisker Bulletin is accurate at the date of publication. However, Fisker Automotive regularly updates technical information. Please check with your Fisker Retailer that the bulletin you intend to use contains the latest available information.



NUMBER: 390120003.01

MODEL: Karma

DATE: January 20, 2012

MODEL YEAR: 2012

TITLE: Baseline 613 Release Overview

Flash Application Lite

Please select the ECU and flash files

ECU Driver Information System

SBL DIS_SBL_0044_00_00.zip

APP DIS_APP_0041_01_33.zip

CAL <choose file>

Prepare vehicle for flash ...
Starting flash ...
Flashing of [DIS_SBL_0044_00_00.zip, DIS_APP_0041_01_33.zip] SUCCESS

NOTE: The DIS should take approximately 20-25 minutes to flash.

4e. When the ECU flash reprogramming has finished; you will be prompted with a message similar to:

*"Flashing of [ECU_SBL_XXXX_00_00.zip, ECU_APP_0350_04_00.zip] **SUCCESS**"*

Fisker Bulletins are intended for use by experienced and trained Technicians. If you lack the skills, tools, equipment and a suitable workshop for any procedure described in this document, we suggest you leave such repairs to an Authorized Fisker Retailer or other qualified shop. See your Fisker Retailer for advice on whether your vehicle may benefit from the information contained within this document. The information contained in the Fisker Bulletin is accurate at the date of publication. However, Fisker Automotive regularly updates technical information. Please check with your Fisker Retailer that the bulletin you intend to use contains the latest available information.



NUMBER: 390120003.01

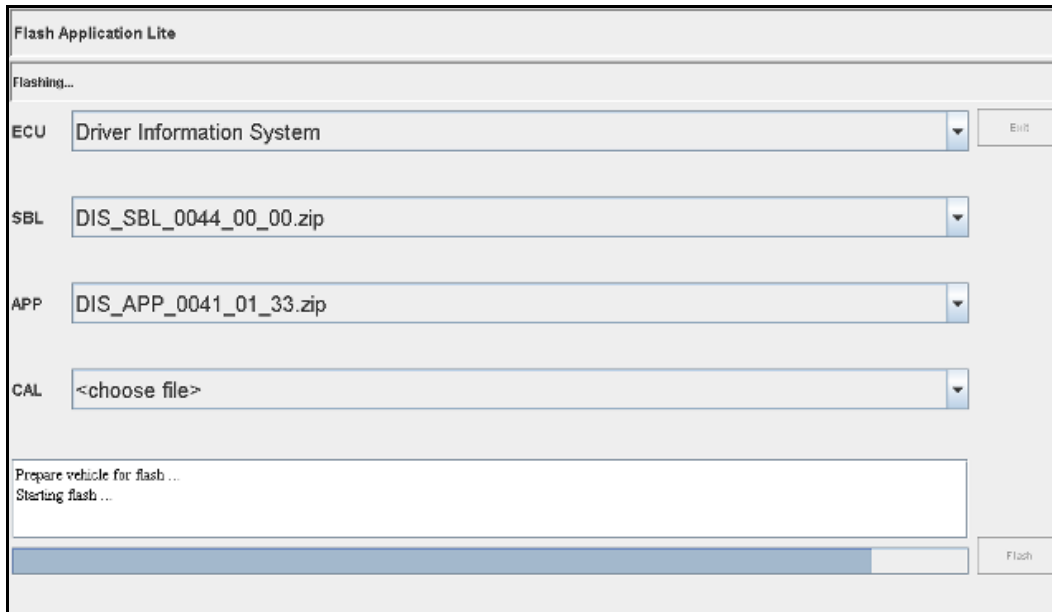
MODEL: Karma

DATE: January 20, 2012

MODEL YEAR: 2012

TITLE: Baseline 613 Release Overview

4f. After the vehicle has been flashed, verify that the Driver Information System ECU Software ID matches the Baseline 613 ECU ID chart on Page 3.



– If the flashing of the ECU has failed, you will see a message such as:

*“Flashing of [ECU_SBL_XXXX_00_00.zip, ECU_APP_0350_04_00.zip] **FAILURE**”*

If the attempt to flash an ECU is unsuccessful, verify:

- The correct files are selected for the Touch Panel Interface.
- The 12 Volt battery is fully charged with a battery maintainer connected.
- The vehicle is in ACC mode.
- The hazard warning lights are turned on to keep the vehicle from falling asleep.

NOTE: *It may take several attempts to successfully flash an ECU.*

4g. When the flash reprogramming has been completed successfully, exit the Flash Application Lite menu.

4h. Before attempting to flash any additional ECUs, power down the vehicle and let it go to sleep.

4h. Power up the vehicle and clear any diagnostic trouble codes (DTC) that may be set. If the DTCs return, diagnose accordingly.

Fisker Bulletins are intended for use by experienced and trained Technicians. If you lack the skills, tools, equipment and a suitable workshop for any procedure described in this document, we suggest you leave such repairs to an Authorized Fisker Retailer or other qualified shop. See your Fisker Retailer for advice on whether your vehicle may benefit from the information contained within this document. The information contained in the Fisker Bulletin is accurate at the date of publication. However, Fisker Automotive regularly updates technical information. Please check with your Fisker Retailer that the bulletin you intend to use contains the latest available information.



NUMBER: 390120003.01

MODEL: Karma

DATE: January 20, 2012

MODEL YEAR: 2012

TITLE: Baseline 613 Release Overview

Vehicle Control Module Flash Reprogramming (Baseline 613)

Preparing the Vehicle for ECU Flash Reprogramming

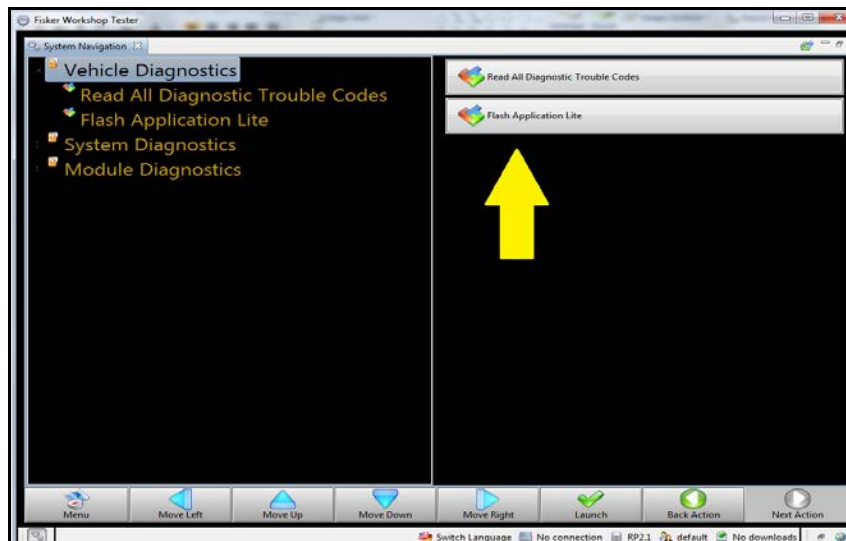
5a. To perform this procedure, see steps 2a – 2d outlined on Pages 7 and 8 of this document.

Connecting the Fisker Scan Tool and Updating Diagnostic Data

6a. To perform this procedure, see steps 3a – 3k outlined on pages 8 through 12 of this document.

Vehicle Control Module Flash Reprogramming with Flash Application Lite

7a. After opening FiskerWT and entering the vehicle information; select Flash Application Lite in the System Navigation menu under Vehicle Diagnostics.



Fisker Bulletins are intended for use by experienced and trained Technicians. If you lack the skills, tools, equipment and a suitable workshop for any procedure described in this document, we suggest you leave such repairs to an Authorized Fisker Retailer or other qualified shop. See your Fisker Retailer for advice on whether your vehicle may benefit from the information contained within this document. The information contained in the Fisker Bulletin is accurate at the date of publication. However, Fisker Automotive regularly updates technical information. Please check with your Fisker Retailer that the bulletin you intend to use contains the latest available information.



NUMBER: 390120003.01

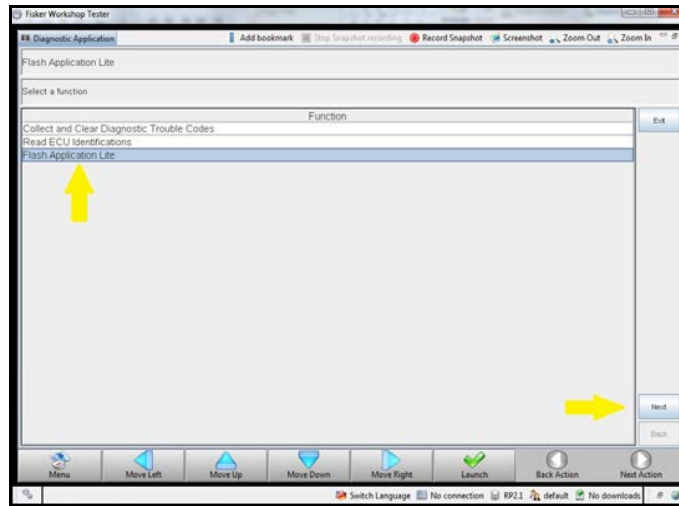
MODEL: Karma

DATE: January 20, 2012

MODEL YEAR: 2012

TITLE: Baseline 613 Release Overview

7b. Click once to highlight "Flash Application Lite." Click "Next" in the bottom right hand corner of the screen to continue.



NOTE: Not all ECUs will have updates in a baseline release. Consult the latest Baseline Release Guide to find the latest software available for an ECU.

7c. In the next screen select the applicable files in the drop down menu:

All Vehicles

ECU	BECM
SBL	BECM_SBL_0154_00_03.zip
APP	BECM_APP_0156_00_15.zip
CAL	BECM_CAL_014F_00_00.dsc.hex

Fisker Bulletins are intended for use by experienced and trained Technicians. If you lack the skills, tools, equipment and a suitable workshop for any procedure described in this document, we suggest you leave such repairs to an Authorized Fisker Retailer or other qualified shop. See your Fisker Retailer for advice on whether your vehicle may benefit from the information contained within this document. The information contained in the Fisker Bulletin is accurate at the date of publication. However, Fisker Automotive regularly updates technical information. Please check with your Fisker Retailer that the bulletin you intend to use contains the latest available information.



NUMBER: 390120003.01

MODEL: Karma

DATE: January 20, 2012

MODEL YEAR: 2012

TITLE: Baseline 613 Release Overview

Flash Application Lite

Please select the ECU and flash files

ECU: BECM

SBL: BECM_SBL_0154_00_03.zip

APP: BECM_APP_0156_00_15.zip

CAL: BECM_CAL_014F_00_00.dsc.hex

Exit

Flash



WARNING!

DO NOT DISTURB THE VEHICLE OR INTERRUPT THE CONNECTION BETWEEN THE SCAN TOOL AND THE VEHICLE ONCE FLASHING HAS STARTED.

THE PROGRESS BAR MAY LOOK FROZEN – THIS IS NORMAL. IF THERE IS A PROBLEM YOU WILL BE ALERTED THAT THE FLASH HAS BEEN UNSUCCESSFUL.

7d. Once the correct files to flash the VCM to Baseline 613 have been selected; Press the “Start Flash” button to begin.

– The scan tool will begin to reprogram the ECM once “Start Flash” has been clicked. In the message box, you will be alerted to the status of the flash.

Example: “Prepare vehicle for flash...” and “Starting flash...”

Fisker Bulletins are intended for use by experienced and trained Technicians. If you lack the skills, tools, equipment and a suitable workshop for any procedure described in this document, we suggest you leave such repairs to an Authorized Fisker Retailer or other qualified shop. See your Fisker Retailer for advice on whether your vehicle may benefit from the information contained within this document. The information contained in the Fisker Bulletin is accurate at the date of publication. However, Fisker Automotive regularly updates technical information. Please check with your Fisker Retailer that the bulletin you intend to use contains the latest available information.



NUMBER: 390120003.01

MODEL: Karma

DATE: January 20, 2012

MODEL YEAR: 2012

TITLE: Baseline 613 Release Overview



WARNING!

DO NOT ALLOW LAPTOP TO GO INTO SLEEP OR SCREENSAVER MODE DURING THIS PROCESS.

TURN OFF SCREEN SAVER IF NECESSARY AND ENSURE PC STAYS AWAKE. LAPTOP MUST BE PLUGGED INTO AC SOURCE DURING THIS PROCESS.

Flash Application Lite

Flashing...

ECU: BECM

SBL: BECM_SBL_0154_00_03.zip

APP: BECM_APP_0156_00_15.zip

CAL: BECM_CAL_014F_00_00.dsc.hex

Prepare vehicle for flash ...
Starting flash ...

Flash

NOTE: The BECM should take approximately 10-15 minutes to flash.

Fisker Bulletins are intended for use by experienced and trained Technicians. If you lack the skills, tools, equipment and a suitable workshop for any procedure described in this document, we suggest you leave such repairs to an Authorized Fisker Retailer or other qualified shop. See your Fisker Retailer for advice on whether your vehicle may benefit from the information contained within this document. The information contained in the Fisker Bulletin is accurate at the date of publication. However, Fisker Automotive regularly updates technical information. Please check with your Fisker Retailer that the bulletin you intend to use contains the latest available information.



NUMBER: 390120003.01

MODEL: Karma

DATE: January 20, 2012

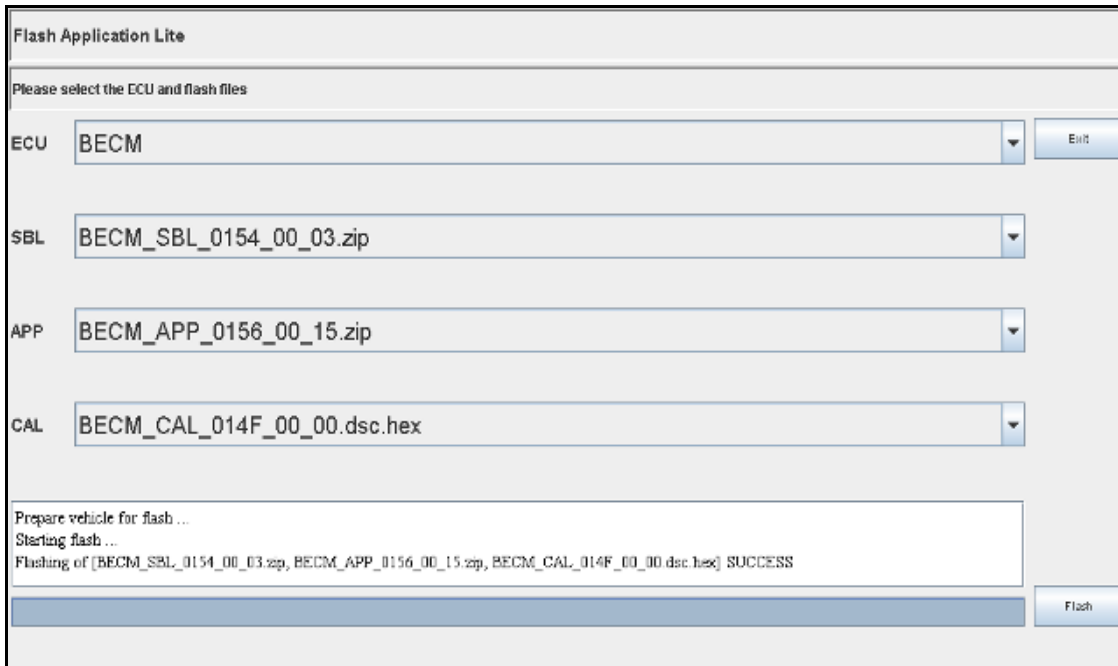
MODEL YEAR: 2012

TITLE: Baseline 613 Release Overview

7e. When the ECU flash reprogramming has finished; you will be prompted with a message similar to:

*“Flashing of [ECU_SBL_XXXX_00_00.zip, ECU_APP_0350_04_00.zip] **SUCCESS**”*

7f. After the vehicle has been flashed, verify that the BECM ECU Software ID matches the Baseline 613 ECU Software ID chart on Page 3.



If the flashing of the ECU has failed, you will see a message such as:

*“Flashing of [ECU_SBL_XXXX_00_00.zip, ECU_APP_0350_04_00.zip] **FAILURE**”*

If the attempt to flash an ECU is unsuccessful, verify:

- The correct files are selected for the VCM.
- The 12 Volt battery is fully charged with a battery maintainer connected.
- The vehicle is in ACC mode.
- The hazard warning lights are turned on to keep the vehicle from falling asleep.

NOTE: *If flashing the VCM fails, the vehicle will not function properly until it is successfully flashed.*

NOTE: *It may take several attempts to successfully flash an ECU.*

Fisker Bulletins are intended for use by experienced and trained Technicians. If you lack the skills, tools, equipment and a suitable workshop for any procedure described in this document, we suggest you leave such repairs to an Authorized Fisker Retailer or other qualified shop. See your Fisker Retailer for advice on whether your vehicle may benefit from the information contained within this document. The information contained in the Fisker Bulletin is accurate at the date of publication. However, Fisker Automotive regularly updates technical information. Please check with your Fisker Retailer that the bulletin you intend to use contains the latest available information.



NUMBER: 390120003.01

DATE: January 20, 2012

MODEL: Karma

MODEL YEAR: 2012

TITLE: Baseline 613 Release Overview

7g. When the flash reprogramming has been completed, exit the Flash Application Lite menu.

7h. Before attempting to flash any additional ECUs, power down the vehicle and let it go to sleep.

7i. Power up the vehicle and clear any diagnostics trouble codes (DTC) that may be set. If the DTCs return, diagnose accordingly

Vehicle Control Module Configuration

To configure the Vehicle Control Module properly it must first be reset to ensure that the new settings are accepted

- After flashing the VCM to the latest software, reset the configuration by flashing the following calibration (CAL) file in Flash Application Lite.

VCM Reset

ECU	Vehicle Control Module
SBL	<choose file>
APP	<choose file>
CAL	VCM_DSC_ECU_RESET_TO_NEW.dsc.hex

- After the ECU has been reset, flash the VCM with the appropriate file listed below:

North American Vehicles

- To set the vehicle to North American configuration settings flash the applicable VCM CAL file listed below:

NA Vehicle with Backup Camera

ECU	Vehicle Control Module
SBL	<choose file>
APP	<choose file>
CAL	VCM_DSC_C012_NA_CONFIG_W_CAMERA.dsc.hex

NA Vehicle without Backup Camera

ECU	Vehicle Control Module
SBL	<choose file>
APP	<choose file>
CAL	VCM_DSC_C012_NA_CONFIG_WO_CAMERA.dsc.hex

Fisker Bulletins are intended for use by experienced and trained Technicians. If you lack the skills, tools, equipment and a suitable workshop for any procedure described in this document, we suggest you leave such repairs to an Authorized Fisker Retailer or other qualified shop. See your Fisker Retailer for advice on whether your vehicle may benefit from the information contained within this document. The information contained in the Fisker Bulletin is accurate at the date of publication. However, Fisker Automotive regularly updates technical information. Please check with your Fisker Retailer that the bulletin you intend to use contains the latest available information.



NUMBER: 390120003.01

MODEL: Karma

DATE: January 20, 2012

MODEL YEAR: 2012

TITLE: Baseline 613 Release Overview

European Vehicles

– To set the vehicle to European configuration settings flash the applicable VCM configuration file listed below:

EU Vehicles with Backup Camera

ECU	Vehicle Control Module
SBL	<choose file>
APP	<choose file>
CAL	VCM_DSC_C012_EU_CONFIG_W_CAMERA.dsc.hex

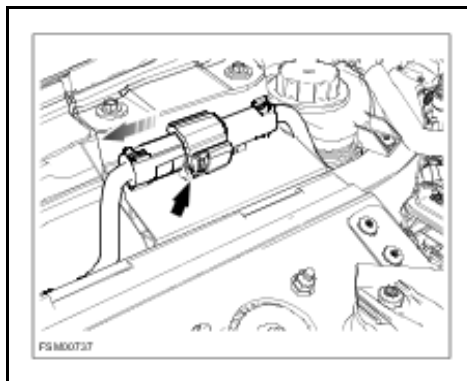
EU Vehicles without Backup Camera

ECU	Vehicle Control Module
SBL	<choose file>
APP	<choose file>
CAL	VCM_DSC_C012_EU_CONFIG_WO_CAMERA.dsc.hex

– Press the flash button to begin. Once completed successfully, the Vehicle Control Module settings will be configured correctly.

8g. When the flash reprogramming has finished, exit the Flash Application Lite menu.

8h. Power down the vehicle. Open the hood and disconnect the 12 Volt battery via connector C104.



12 Volt Battery Negative Connector C104

Fisker Bulletins are intended for use by experienced and trained Technicians. If you lack the skills, tools, equipment and a suitable workshop for any procedure described in this document, we suggest you leave such repairs to an Authorized Fisker Retailer or other qualified shop. See your Fisker Retailer for advice on whether your vehicle may benefit from the information contained within this document. The information contained in the Fisker Bulletin is accurate at the date of publication. However, Fisker Automotive regularly updates technical information. Please check with your Fisker Retailer that the bulletin you intend to use contains the latest available information.



NUMBER: 390120003.01

MODEL: Karma

DATE: January 20, 2012

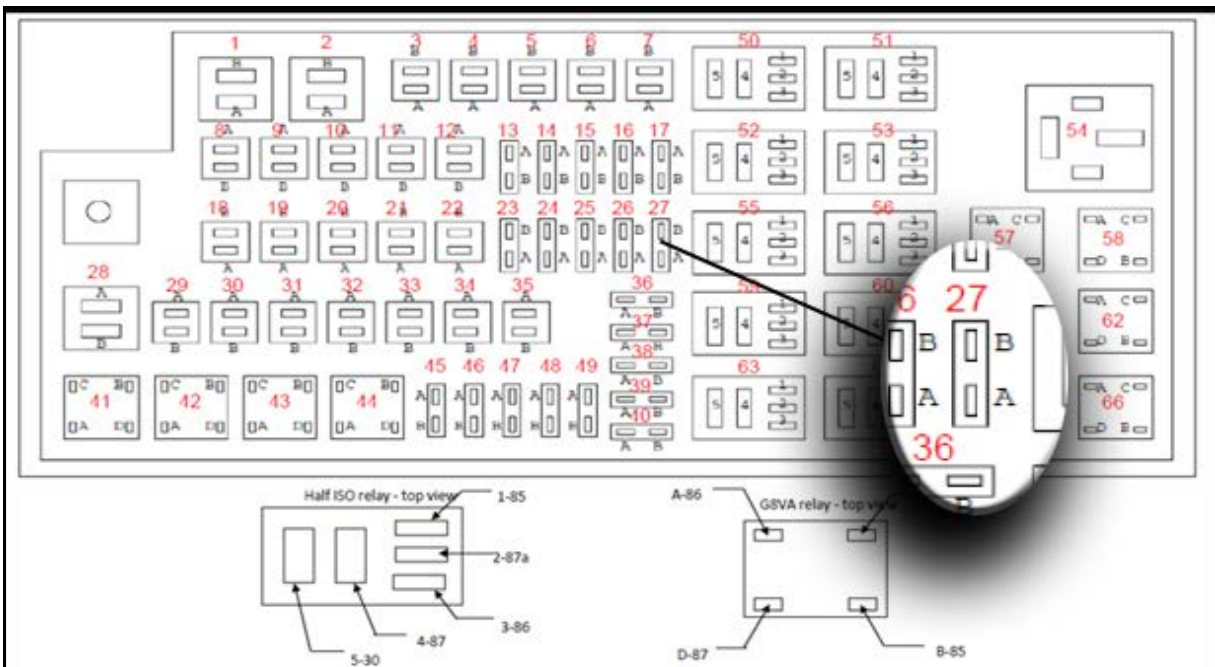
MODEL YEAR: 2012

TITLE: Baseline 613 Release Overview

8i. With the 12 Volt battery disconnected, remove Fuse 27 (25 amp) from the Power Distribution Center (PDC). This will disable the Solar Panel from powering the 12 Volt battery.

- Let the vehicle sit for 10 minutes to clear the memory cache in the ECUs.

8j. Reconnect the 12 Volt battery via connector C104 and install Fuse 27 (25 amps).



8k. Turn the vehicle back on to ACC mode.

- Use the scan tool to clear any remaining DTC codes.

NOTE: If the MIL light is still illuminated, use the scan tool to read DTC codes and diagnose accordingly.

Fisker Bulletins are intended for use by experienced and trained Technicians. If you lack the skills, tools, equipment and a suitable workshop for any procedure described in this document, we suggest you leave such repairs to an Authorized Fisker Retailer or other qualified shop. See your Fisker Retailer for advice on whether your vehicle may benefit from the information contained within this document. The information contained in the Fisker Bulletin is accurate at the date of publication. However, Fisker Automotive regularly updates technical information. Please check with your Fisker Retailer that the bulletin you intend to use contains the latest available information.



NUMBER: 390120003.01

DATE: January 20, 2012

MODEL: Karma

MODEL YEAR: 2012

TITLE: Baseline 613 Release Overview

PARTS REQUIRED:

PART NUMBER	DESCRIPTION
N/A	

SHOP SUPPLIES:

DESCRIPTION
Fisker Laptop Scan Tool
WDI with USB Cable Connection

SPECIAL TOOLS:

DESCRIPTION
FST9001 – Battery Charging Terminal Adaptor
Midtronics MDX Series Tester (or equivalent)

LABOR CODES:

CODE	DESCRIPTION	TIME	DEFECT CODE
16-20-02-07	Campaign 390120003 / Repair	0.8	16-20-02-98

CAUSAL PART:

PART NUMBER	DESCRIPTION
C131118001001	High Voltage Battery

WARRANTY DISPOSITION:

Vehicles with a valid warranty

CONTACT:

Fisker Automotive

5515 E. La Palma

Anaheim CA 92807

Tel: +1 949 - 433 -1368 Fax: +1 714 888 4256

Website: www.fiskerautomotive.com

Fisker Bulletins are intended for use by experienced and trained Technicians. If you lack the skills, tools, equipment and a suitable workshop for any procedure described in this document, we suggest you leave such repairs to an Authorized Fisker Retailer or other qualified shop. See your Fisker Retailer for advice on whether your vehicle may benefit from the information contained within this document. The information contained in the Fisker Bulletin is accurate at the date of publication. However, Fisker Automotive regularly updates technical information. Please check with your Fisker Retailer that the bulletin you intend to use contains the latest available information.